



Wiltshire House Maidstone Buildings Mews SE1



Wiltshire House

Maidstone Buildings Mews,
London SE1

A four double bedroom penthouse warehouse conversion located close to Borough market. The apartment exceeds 2,700 sq ft of accommodation arranged over two floors with a large roof terrace offering 360° views of the City skyline, the Shard of Glass and the South Bank. The roof terrace creates a very private and peaceful setting to enjoy London's skyline.

The apartment has a large variety of original warehouse character throughout, including exposed brick work in every room, iron columns, wooden vaulted ceilings and cast iron window frames. The accommodation is arranged as four double bedrooms, two at each end of the property. There are three bathrooms, one en suite and a large walk in wardrobe attached to the main bedroom, as well as a spacious entrance hall with storage. The living area comprises of three open-plan spaces with the main room being on the lower level featuring a rarely seen wood burning fireplace designed by Focus. There is a wood store, a double height ceiling and several sky light windows. The upper area benefits from a kitchen and dining area, study and lounge.

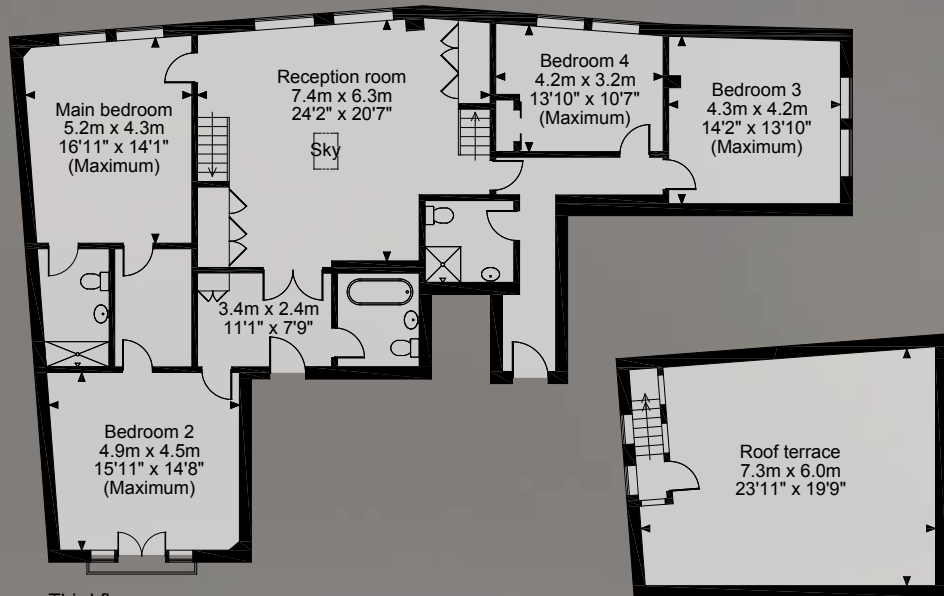
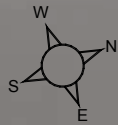
The penthouse is one of London's most unique warehouse apartments due to its overall size, amount of retained original features and character, natural light and the views you see from the large roof terrace.

Maidstone Buildings Mews is one of the Southbank's premier developments, set in a secure cobbled courtyard off Borough High Street, close to Borough Market and the river front. There is daytime portage, lift access and a gated entrance.

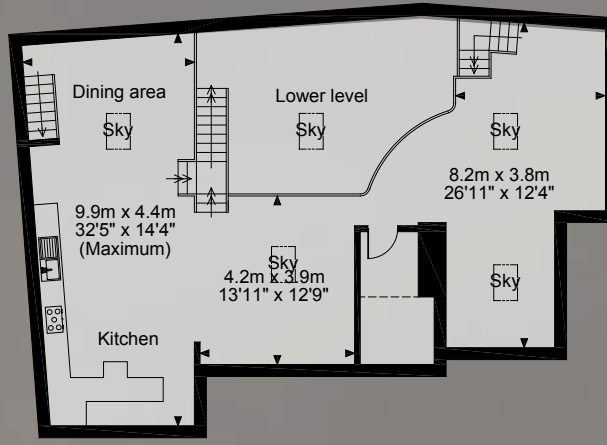
Guide price £2,950,000 leasehold







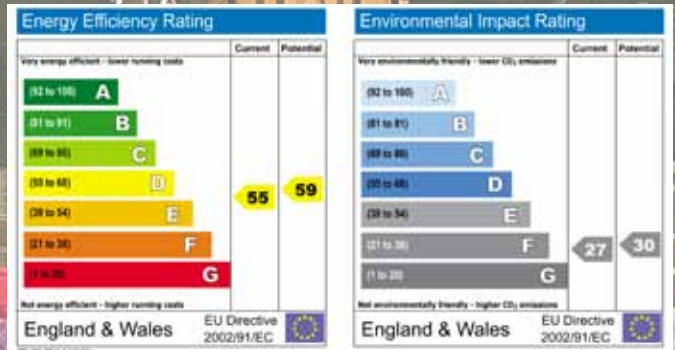
Third floor



Fourth floor

Apartment = 255 sq m (2,748 sq ft)
 Roof Terrace = 40 sq m (342 sq ft)

Cluttons LLP for itself and as agent for the vendor or lessor (as appropriate) gives notice that: 1. These particulars are only a general outline for the guidance of intending purchasers or lessees and do not constitute in whole or in part an offer or a Contract. 2. Reasonable endeavours have been made to ensure that the information given in these particulars is materially correct but any intending purchaser or lessee should satisfy themselves by inspection, searches, enquiries and survey as to the correctness of each statement. 3. All statements in these particulars are made without responsibility on the part of Cluttons LLP or the vendor or lessor. 4. No statement in these particulars is to be relied upon as a statement or representation of fact. 5. Neither Cluttons LLP nor anyone in its employment or acting on its behalf has authority to make any representation or warranty in relation to this property. 6. Nothing in these particulars shall be deemed to be a statement that the property is in good repair or condition or otherwise nor that any services or facilities are in good working order. 7. Photographs may show only certain parts and aspects of the property at the time when the photographs were taken and you should rely upon actual inspection. 8. No assumption should be made in respect of parts of the property not shown in photographs. 9. Any areas, measurements or distances are only approximate. 10. Any reference to alterations or use is not intended to be a statement that any necessary planning, building regulation, listed building or any other consent has been obtained. 11. Amounts quoted are exclusive of VAT if applicable.



020 7407 3669

Cluttons LLP
 36 Horselydown Lane
 Tower Bridge
 London SE1 2LN
 towerbridge@cluttons.com

cluttons.com



This is made from FSC® certified paper, part of our commitment to use more sustainable materials. FSC® protecting the world's forests for the future. Please recycle.

For identification purposes only. Not to scale.

September 2011

